

**PARKLAND COLLEGE  
ANNUAL GRANT REPORT  
July 1, 2008 – June 30, 2009**

Prepared for the  
Parkland College  
Board of Trustees

## **MISSION STATEMENT**

Parkland's Office of Grants and Contracts has as its mission "to help administrators, faculty, and staff prepare grant proposals to provide funding for projects that will benefit the students of Parkland College and the residents of East Central Illinois.

## **COMMUNITY GRANT SUPPORT GROUP**

The Office of Grants and Contracts takes seriously its role in serving the needs of the community. To this end, the office hosts a Community Grant Support Group that brings Parkland faculty and staff together with community members to talk about the grant process, share concerns, and discuss possible collaborations. The group is open to all and meets once a month.

## **GRANT SERVICES OUTREACH**

Our office provides ongoing monthly grant searches for up to four community-based, non-profit organizations. Organizations, such as the Boy Scouts, Don Moyer Boys and Girls Club, Big Brothers Big Sisters of Champaign County, Joann Dorsey Family Homes, and Champaign County CASA, receive approximately two hours of active grant searching per month by Grants and Contracts staff at no cost.

## **OTHER HIGHLIGHTS**

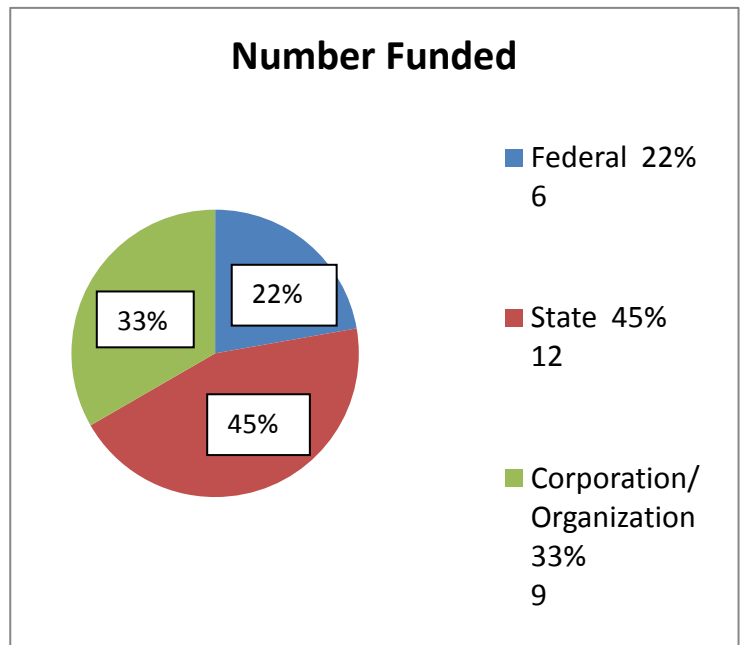
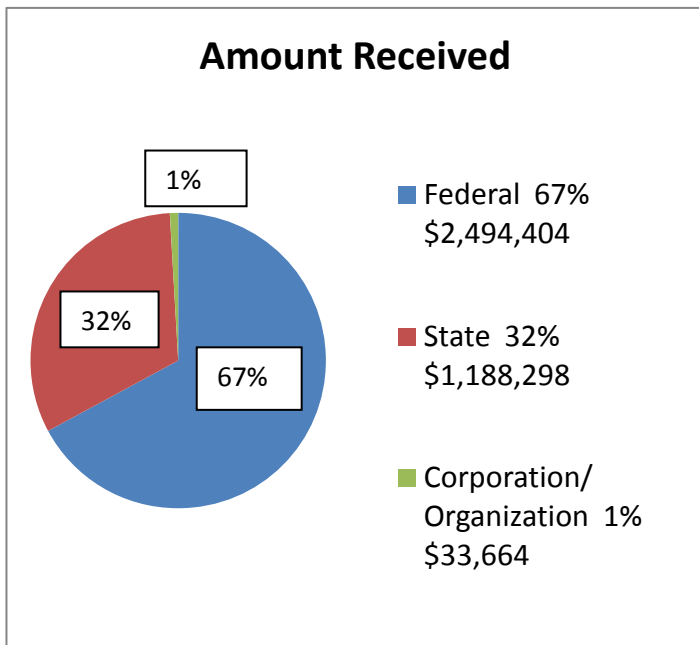
The Office of Grants and Contracts experienced a change in leadership during the reporting period with Dr. Ray Spencer beginning as director in October, 2008. In January, 2009, Jill Garner was hired as the Grants Assistant. This past year, Parkland College received a \$1.5 million Community-Based Job Training Grant from the U.S. Department of Labor for industrial maintenance training.

## What are our year ending 6/30/09 funding sources?

In FY 2009, Parkland applied for grants from the federal government, state sources, corporations, professional organizations, and foundations.

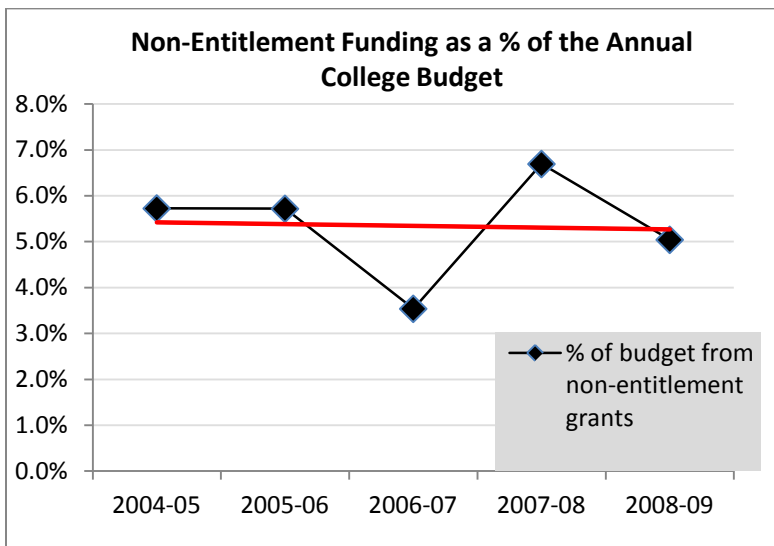
Funder Type	Grants Funded in 08-09	Grants Pending in 08-09	Grants not Funded in 08-09	Amount Received 08-09
<b>Federal</b>	6	4	1	2,494,404
<b>State</b>	12	6	1	1,188,298
<b>Corporate/Organization</b>	9	7	12	33,664
<b>Total</b>	27	17	14	\$3,716,366

Note: Some grants submitted in 08-09 are still pending; likewise, some of the grants received in 08-09 were submitted in 07-08.

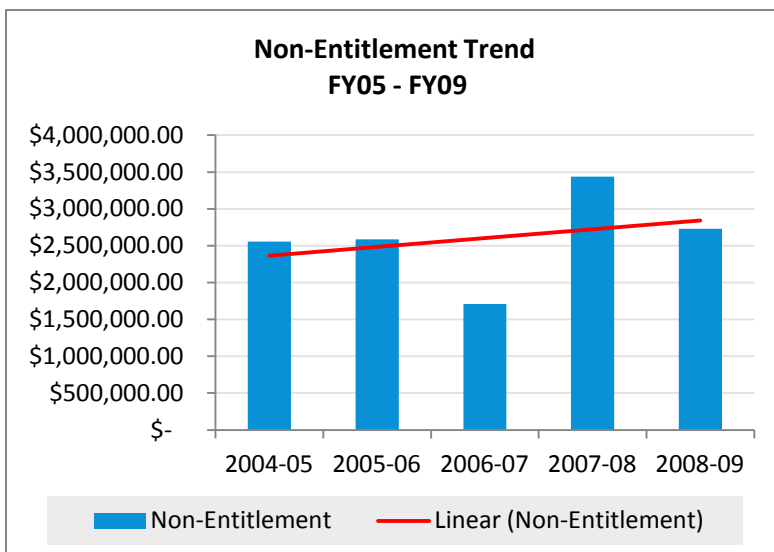


## Percent of Funds from Non-Entitlements

Fiscal Year	Amount Received	Percent of all Grants Received
2008-09	\$ 2,728,644	73%
2007-08	\$ 3,438,757	76%
2006-07	\$ 1,710,731	36%
2005-06	\$ 2,588,130	54%
2004-05	\$ 2,555,256	59%
2003-04	\$ 3,833,905	94%
2002-03	\$ 3,823,573	84%
2001-02	\$ 4,066,006	80%
2000-01	\$ 3,851,938	78%
1999-00	\$ 3,998,934	82%
1998-99	\$ 3,433,564	79%



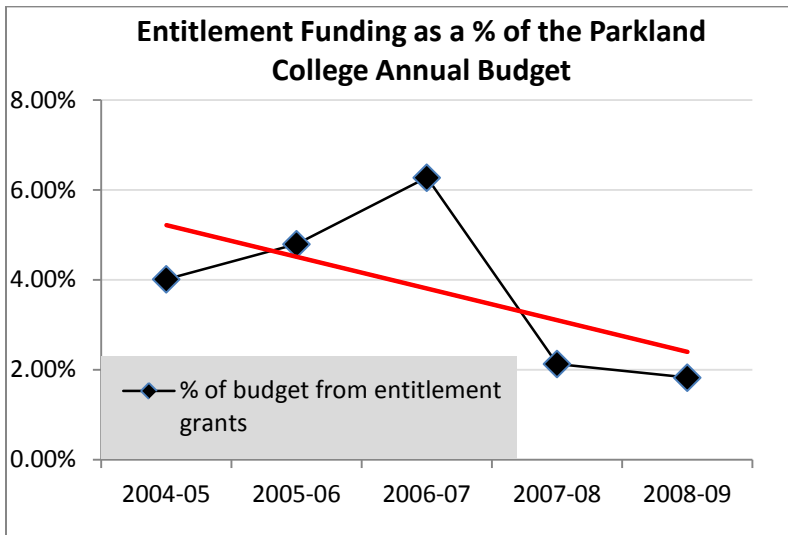
The figure to the left shows the percentage contribution of non-entitlement (competitive) grants compared to the Parkland College budget for each of the past five years. These data indicate a very consistent five-year trend. The amount of competitive funding secured by the Office of Grants and Contracts has increased at roughly the same rate as the college budget since FY05.



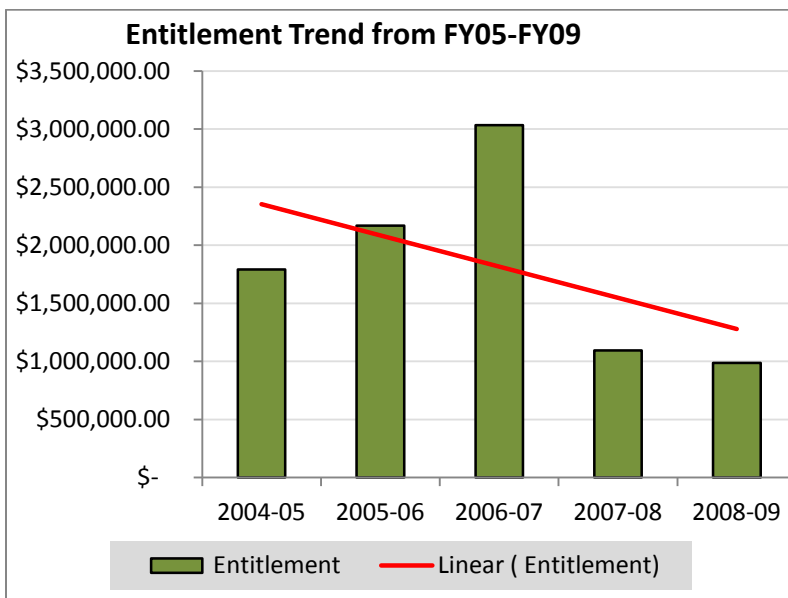
The figure to the left shows the total amount of money procured each year through non-entitlement (competitive) grants over a five-year period. Additionally, a linear trend-line is shown which indicates the gradual positive progression in yearly totals procured solely through competitive announcements.

## Percent of Funds from Entitlements

Fiscal Year	Amount Received	Percent of all Grants Received
2008-09	\$ 3,716,366	27%
2007-08	\$ 4,532,916	24%
2006-07	\$ 4,743,992	64%
2005-06	\$ 4,758,348	46%
2004-05	\$ 4,347,014	41%
2003-04	\$ 4,073,868	6%
2002-03	\$ 4,561,375	16%
2001-02	\$ 5,096,799	20%
2000-01	\$ 4,922,471	22%
1999-00	\$ 4,850,741	18%
1998-99	\$ 4,334,839	21%



The figure to the left shows the percentage contribution of entitlement (non-competitive) grants compared to the Parkland College budget for each of the past five years. These data indicate a downward five-year trend (shown by the linear trend-line) which indicates the amount of entitlement grants Parkland College receives annually has decreased compared to the college budget over the last five



The figure to the left shows the total amount received from entitlements each year over a five-year period. This figure provides a linear trend-line which indicates the gradual decrease in yearly totals received solely through entitlements.

## What types of grants were sought?

<b>Awarded</b>			
Federal	6 applications	2,494,404	
State (Competitive)	7 applications	203,876	
State (Entitlement)	5 applications	984,422	
Corporate/Organizations	9 applications	33,644	
<b>Total</b>	<b>27 applications</b>		<b>\$3,716,366</b>
<b>Pending</b>			
Federal	4 applications	1,151,187	
State	6 applications	767,526	
Corporate/Organizations	7 applications	649,300	
<b>Total</b>	<b>17 applications</b>		<b>\$2,568,013</b>
<b>Not Funded</b>			
Federal	1 application	241,279	
State	1 application	18,700	
Corporate/Organizations	12 applications	469,751	
<b>Total</b>	<b>14 applications</b>		<b>\$ 729,730</b>
<b>Total for all applications</b>	<b>58 applications</b>		<b>\$7,014,109</b>

## Who did our grant funds serve?

<b>Population</b>	<b>Proposals Pending or not Funded in 08-09</b>	<b>Total \$\$ Pending or not Funded</b>	<b>Grants Received in 08-09</b>	<b>Total \$\$ Requested Received</b>
All students	3	407,221	4	6,800
Business and industry	3	216,970	5	1,678,509
Career students	4	451,000	6	1,004,422
Disadvantaged students	3	468,294	2	39,959
General public	3	214,600	2	84,043
Infants/toddlers/preschoolers	1	8,000	1	3,839
International students	0	0	3	830,419
K-12	8	200,000	2	1,625
Older adults	1	24,849	0	0
Underprepared students	4	1,297,182	2	66,750
Veterans	1	99,627	0	0
<b>Totals</b>	<b>31</b>	<b>\$3,297,743</b>	<b>27</b>	<b>\$3,716,366</b>

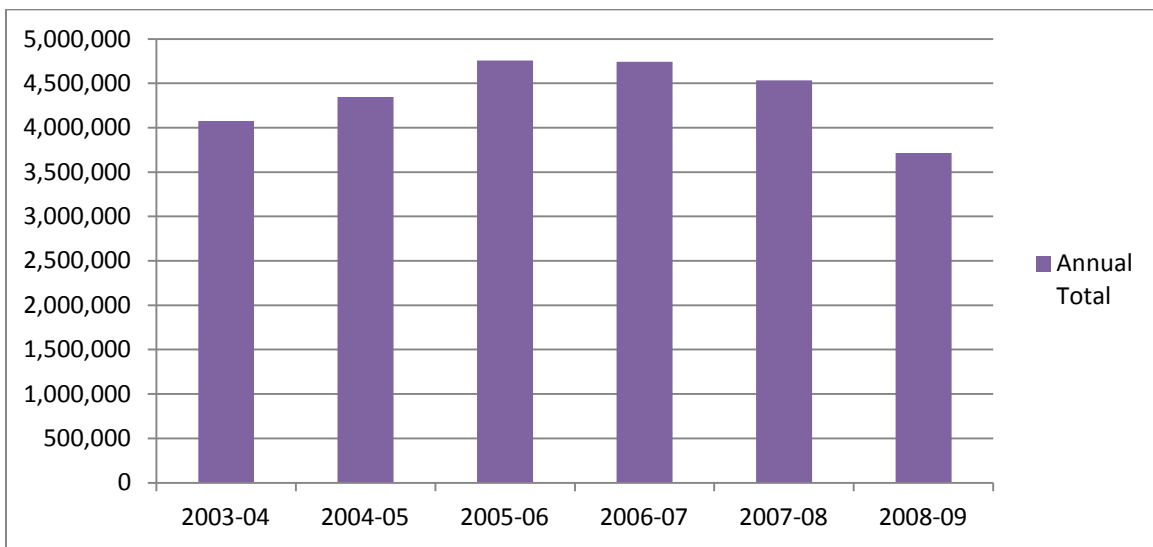
## Who applied for grants?

<b>Unit</b>	<b>Proposals Pending or not Funded in 08-09</b>	<b>Total \$\$ Pending or not Funded</b>	<b>Grants Received in 08-09</b>	<b>Total \$\$ Requested and Received</b>
Academic Services	2	100,000	0	0
Adult and Workforce Education	5	842,128	3	498,939
Business and Agri-industries	1	1,000	0	0
Business Training	1	56,265	3	163,560
Career Programs	0	0	3	462,710
Center for Academic Success	1	360,591	1	20,000
Child Development Center	2	231,740	1	3,839
Community Education	2	3,000	3	3,175
Computer Science and Information Technology	1	130,705	0	0
Engineering Science and Technologies	1	240,000	1	1,564,472
Fine and Applied Arts	1	14,600	1	4,530
Health Professions	0	0	1	20,000
International Education	0	0	3	830,419
Social Science	0	0	1	38,759
Library	0	0	3	5,250
Natural Sciences	7	627,591	1	79,513
Physical Plant	1	90,000	0	0
Student Services	2	100,127	1	1,200
Wellness Center	1	17,221	0	0
Workforce Development	2	480,000	1	20,000
<b>Total</b>	<b>31</b>	<b>\$3,297,743</b>	<b>27</b>	<b>\$3,716,366</b>

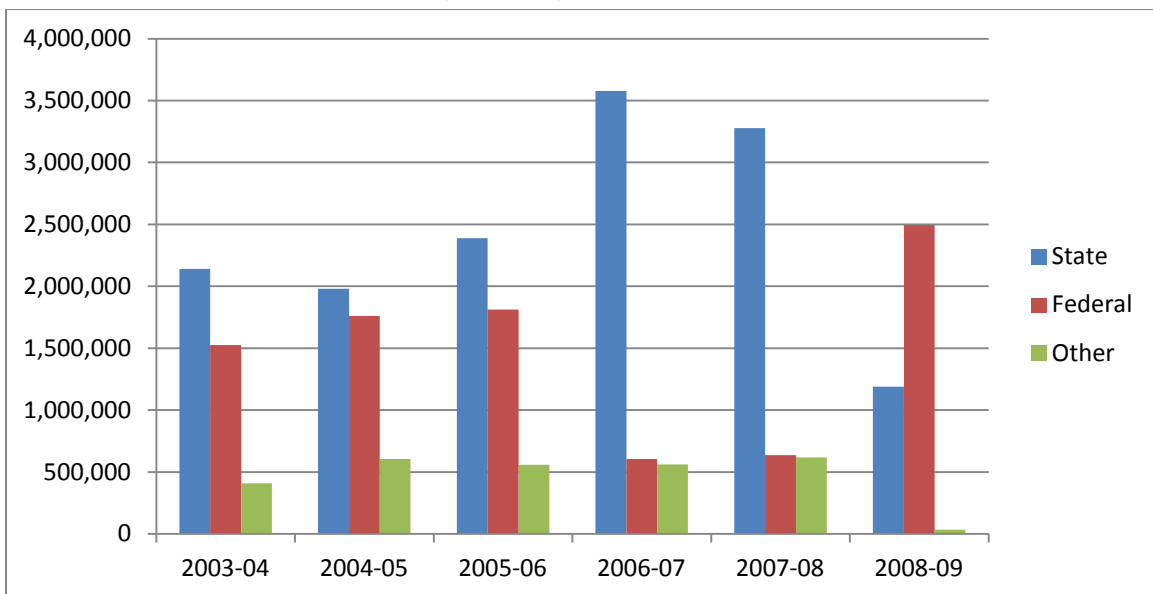
## Six-Year Trends

Fiscal Year	Federal Grants (\$)	State Grants (\$)	Other Grants (\$)	Awarded (\$)
2008-2009	2,494,404	1,188,298	33,664	3,716,366
2007-2008	636,371	3,278,459	618,086	4,532,916
2006-2007	605,614	3,578,576	559,802	4,743,992
2005-2006	1,812,266	2,387,731	558,351	4,758,348
2004-2005	1,760,542	1,980,837	605,636	4,347,015
2003-2004	1,526,210	2,139,288	408,370	4,073,868

### Totals for Fiscal Year



### Totals for Fiscal Year: Federal, State, and Other Grants





## Partnerships

Parkland collaborated with the following partners on grants submitted in 2008-2009.

African American Cultural Program	Illinois Wesleyan University
American Association of Community Colleges	Joliet Junior College
Association of Community College Trustees	Kraft
AVID (Advancement Via Individual Determination)	Lincoln Land Legal Assistance Foundation
Boston Museum of Science	Moraine Valley Community College
Carle Foundation Hospital	North Central College
Champaign Consortium	Northern Illinois University
Champaign Schools Unit 4	Parkland College Foundation
Education for Employment systems	Plastipak
Erikson Institute	Southern Illinois University, Carbondale
Family Services of Champaign/Urbana	Southern Illinois University, Edwardsville
Flex-N-Gate / Guardian West	United Church Foundation
Heartland Community College	University of Illinois at Urbana-Champaign
Illinois Central College	University of Illinois at Chicago

## Acknowledgements

The Office of Grants and Contracts staff greatly appreciates the project directors, principal investigators, and everyone who contributed their time and effort to preparing proposals and administering grants this year.

Don Bergfield (1)	Triss Henderson (3)	Ev Levitt (2)	Becky Osborn (1)
Kathy Bruce (4)	Minor Jackson (3)	Yi Luan (1)	Seamus Reilly (3)
June Burch (2)	Nancy Kemna (3)	Billi Mitchell (1)	Bobbi Scholze (1)
Toni Burkhalter (1)	Rich Lake (4)	Maria Mobasseri (1)	Dorothy Voyles (1)
Jim Bustard (1)	Sheri Langendorf (1)	Biran Nudelman (1)	Tim Wendt (1)
Tom Caulfield (2)	Charles Larenas (1)	Marsha Reardon (1)	David Wilson (1)
Lisa Costello (2)	Pam Lau (2)	Alison Smith (1)	Suzanne Wingate (2)
Raeann Dossett (1)	David Leake (3)	Tawanna Nickens (5)	
Amy Fleshner (1)	Heidi Leuszler (2)	Ed O'Sullivan (1)	