

**GMAS: CER MEDICAL ASSISTING
SELECTIVE ADMISSIONS SCORE SHEET**

Term: Fall _____

Student Label-Paste Here

Academic Year: _____

Instructions:

- Evaluate students assessment scores for the GMAS CER program
- If the answer to the ENG, CCS, and MAT assessments are **yes**, then proceed to the other classes to add possible points. Put grades after each class completed or “in process”.
- The points system for courses successfully completed with a C or greater will be calculated by Program Director

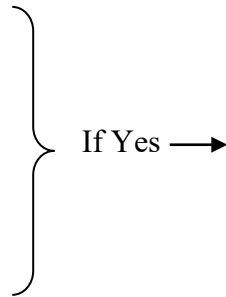
**PLACEMENT
INTO:**

_____ ENG 101

_____ CCS 099

_____ MAT 072

_____ If English is
second language
TOEFL (18-18-22-20)
or IELTS (6-6-6.5-5)



HCS 151 (1 point)

HCS 154 (3 points)

HCS 173 (1 point)

HCS 174 (1 point)

SCORED

GRADES

TOTAL SCORE= _____ / out of 6 point max.

TOTAL PGPA= _____ /Min PGPA 2.5