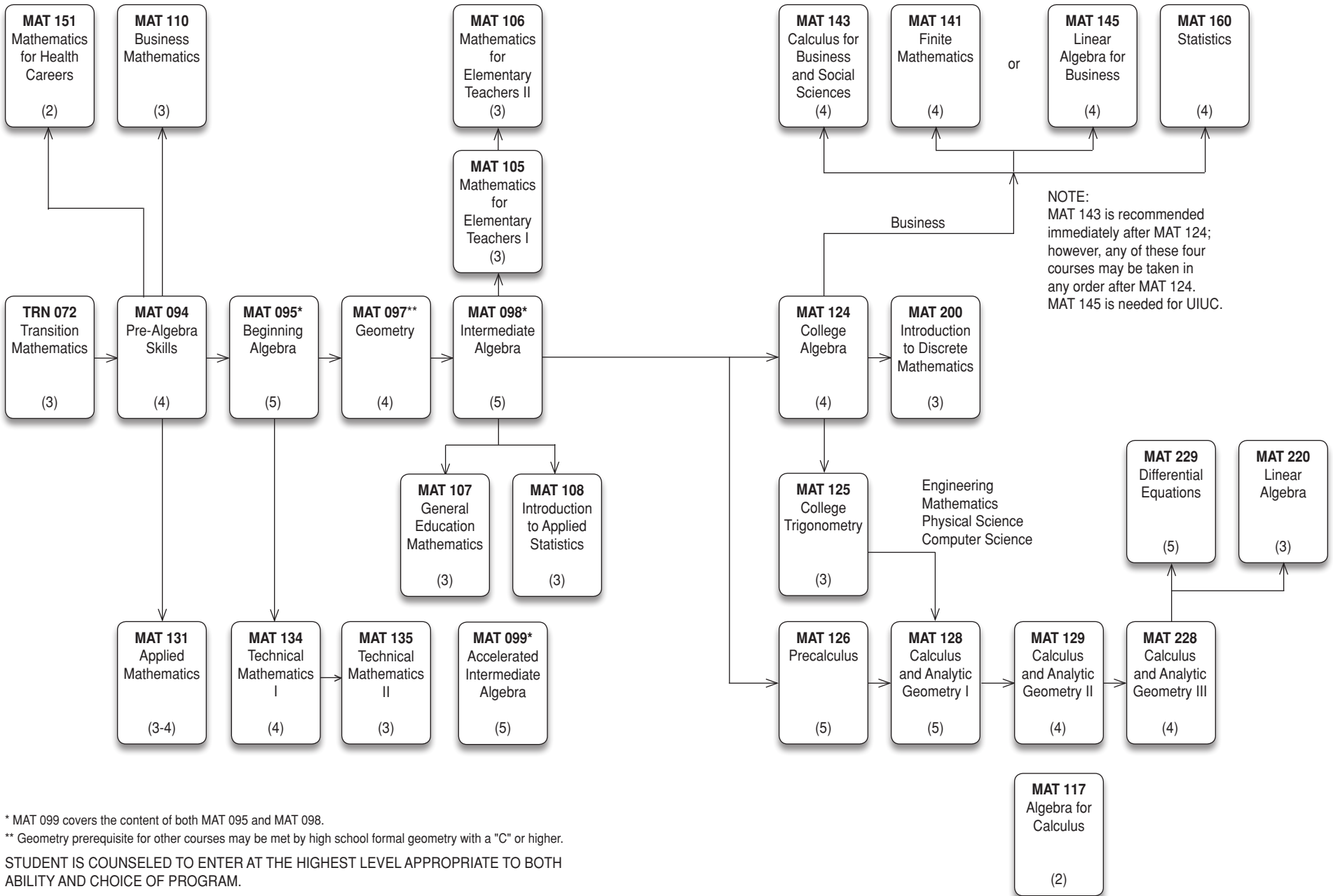


# PARKLAND COLLEGE MATHEMATICS SEQUENCES



\* MAT 099 covers the content of both MAT 095 and MAT 098.

\*\* Geometry prerequisite for other courses may be met by high school formal geometry with a "C" or higher.

STUDENT IS COUNSELED TO ENTER AT THE HIGHEST LEVEL APPROPRIATE TO BOTH ABILITY AND CHOICE OF PROGRAM.

Number of semester hours of credit is shown in parentheses.